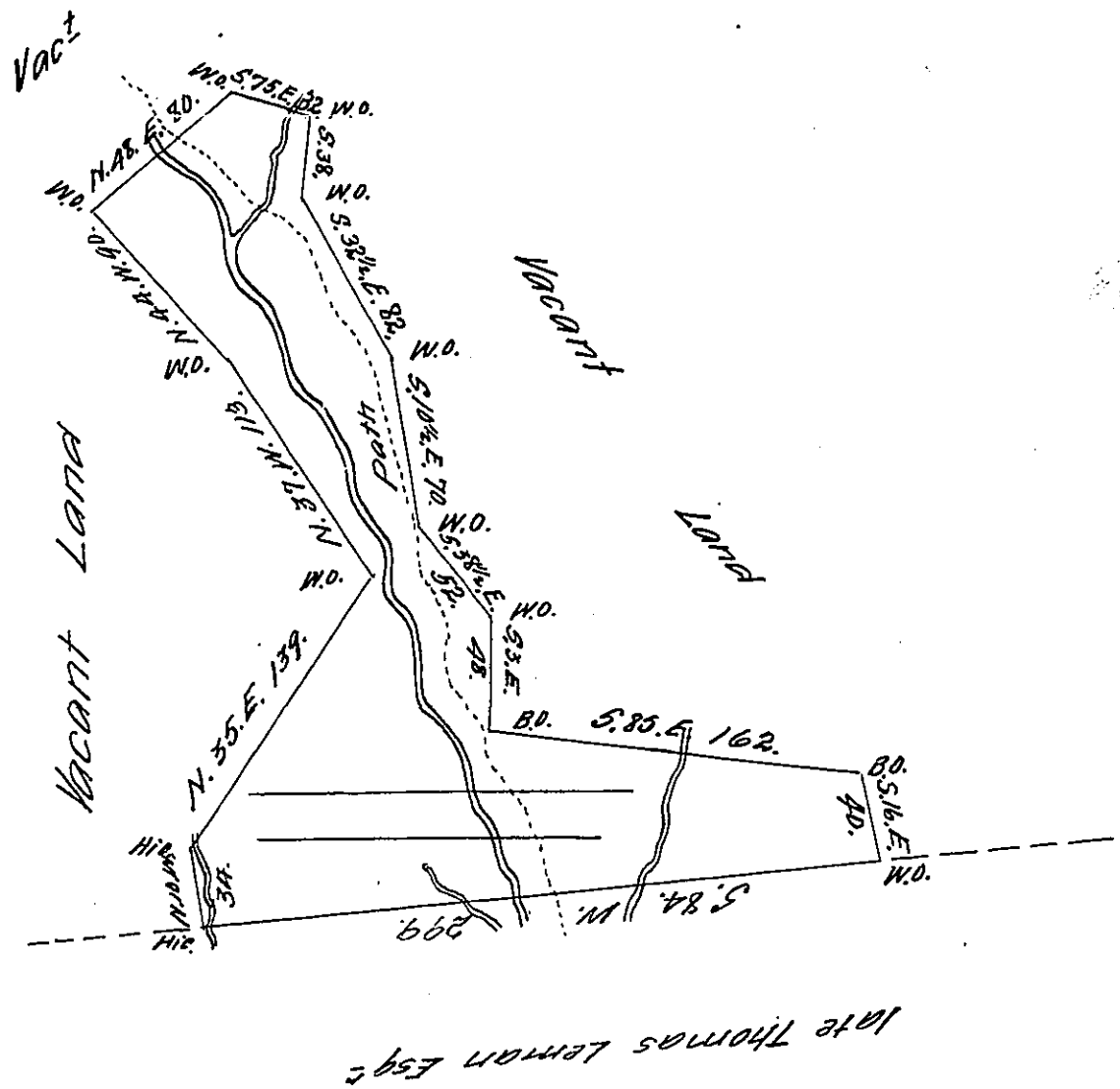


New Lycamming County



A Draught of a Tract of Land called Strawberry Dale Situate
 On the Path that leads from the Mouth of Loyal Sock to
Sheshegenunk and about one Mile from the West Branch
 of Susquehanna in the County of Northumberland.
 Survey'd the 20th Day of November 1773 for George Noarth
 Esq^r In pursuance of a Warrant dated the 28th Day
 of Oct^r 1773 Containing Two hundred and Eleven acres
 & allow^{ce} of 6 p Cent

Cha^s Lukens D.S.

To JOHN LUKENS Esq^r
 Surveyor General.

IN TESTIMONY that the above is a copy of the original remaining on file in
 the Department of Internal Affairs of Pennsylvania, made
 conformably to an Act of Assembly approved the 16th day of
 February, 1833, I have hereunto set my Hand and caused
 the Seal of said Department to be affixed at Harrisburg,
 this — Seventh — day of — June — 1911.

Henry Horck
 Secretary of Internal Affairs.